



REAL SOUND for REAL PEOPLE

**psb**  
**SPEAKERS**



PSB Imagine T3 Tower in Gloss Cherry Wood Veneer



## PSB Speakers – A Sound Story

The PSB Speakers story is the story of the little brand that could. PSB Speakers came from humble roots as a hobbyist's upstart in a garage in Waterloo, Ontario, Canada. It was with sheer passion and dedication to his craft that Paul Barton, PSB's Founder and Chief Designer, built an acoustics brand that could rival the biggest in the industry in terms of both sound quality and value.

Today, PSB is among the most critically acclaimed speaker brands in the world and Barton remains deeply involved in the research and development behind every speaker, carefully voicing each one at Canada's renowned National Research Council. With a mad scientist's obsessive focus, Barton designs and carries out double-blind listening sessions to determine what speaker attributes make the most life-like listening experience. The results of these experiments are audible in the articulation and body of every musical note and sound reproduced on PSB speakers.

PSB Imagine T3 Tower and Imagine C3  
in Gloss Black



PSB Imagine T3 Tower in Gloss Cherry Wood Veneer

"Paul Barton has taken his time to produce his greatest loudspeaker, but it's been worth the wait!

He has succeeded in upscaling all the best characteristics of the smaller models to the larger PSB Imagine T3. Not only does the T3 sound great but it maintains PSB's usual value for money."

— HiFi Stars

## Imagine T3 & C3

If there has ever been a speaker that represents the latest and most advanced thinking of PSB loudspeaker design, it is the new premium Imagine T3 and C3. The Imagine T3 and C3 are a spectacular display of clean, well-integrated bass response and pinpoint imaging. The perfect proportion of Sound Power, combined with extremely even frequency response and uniform off-axis response, creates a massive, effortless sounding and precisely detailed sound field.

Home theatre enthusiasts can create a perfectly matched surround sound system by combining the Imagine T3 for left and right speaker positions, and the Imagine C3 as the centre channel speaker. The identical voicing of these speakers creates a seamless and expansive sound field. Other Imagine models, including specialised surround speakers in stand mount, wall mount, in-wall and in-ceiling options complete the surround experience.

 Available in Gloss Cherry or Gloss Black\*



\*Some finishes may not be available in all countries.



PSB Imagine T3 Tower foot detail



## Imagine T3 – Performance in the Details

The Imagine T3's tall and slender cabinet not only looks great, but is designed to optimise the placement of the cones to produce the widest possible range of frequencies without any distortion. Made up of three woofers, a tweeter, and a midrange driver built into a structurally rigid cabinet, the T3 offers the fullest and purest sound experience of any PSB speaker to date.

The three 7-inch woofers are arranged in a transitional array, where all the woofers combine to produce the longest wavelengths of sound in the lowest frequencies. The woofers are built into individually-tuned chambers and carefully spaced to deliver clean and robust bass response. At higher musical frequencies, the woofers adapt their output until only the woofer adjacent to the midrange driver is active, creating a perfect transition with uniform off-axis response.

The midrange frequencies, where human hearing is most sensitive to the pitch and timbre of instruments and voices, are produced by a unique 5 1/4" driver, tuned and isolated in its own sealed chamber. The result is outstanding articulation and robustness of this range of frequencies, which envelops the listener in one of the richest sensory experiences possible from loudspeakers.

The Imagine T3 is using a hand-selected version of PSB's famous titanium dome tweeter, which is placed in the tower at ear level for most listeners to create the best listening experience. This 1" dome features a neodymium magnet, high temperature voice coil and ferrofluid cooling, allowing it to keep pace with the high power handling of the rest of the speaker. Several years spent perfecting the production process has resulted in a tweeter with extremely smooth response and amazingly low distortion compared with other well-known tweeter designs.



PSB Imagine T2 Tower and Imagine C Centre



## Imagine Series – The Performers

**Imagine C** – A dual-woofer, horizontal two-way centre-channel speaker that performs impressively well in a multi-channel environment, reproducing every last nuance of sound.


**Imagine T2 Tower** – Imagine T2 Tower speaker, a high performance, transitional 5-way tower speaker equipped with Triple Port Bass Reflex and subdivided discrete chambers. This tower speaker design offers a sound experience that rivals loudspeakers costing two to three times more.

**Imagine T Tower** – Destined to become the standard of value among audio and home theatre fans for whom real-world sonic performance is the benchmark of excellence. Compound-curved on every vertical face, and outstanding sonic performance makes this speaker (and the Imagine Series in general) a true “Class Leader”.

**Imagine B** – A compact two-way stand/bookshelf-mount ideally suited for front channels/stereo playback, these speakers deliver remarkable clarity, detail and bandwidth.

**Imagine S** – A dual-two-way, selectable dipole/bipole/dual-channel monopole surround loudspeaker, which may be connected as two discrete (side/rear) two-way pairs in compatible systems.



 Available in Dark Cherry Wood Veneer, Black Ash Wood Veneer, Gloss Black or Gloss White\*

\*Some finishes may not be available in all countries.



PSB W3 On-Wall Speaker



## Imagine Series – The minis

**Imagine mini** – The deceptively small Imagine mini speaker makes a big impact on an already impressive range of award-winning Imagine speakers. With its high-performance and compact size, the mini is as versatile as it is cute.

The mini produces a large soundstage and impressive bass along with the true-to-nature sound for which PSB is known. Our engineers designed the crossover frequency very low relative to the woofer size in order to provide the same sound no matter where the speaker is placed.

**Imagine mini C** – the perfect accompaniment to the Imagine mini. Together, they form a compact, yet musically powerful home theatre system. This centre channel features a pair of 4" woofers and a 1" titanium dome tweeter in a horizontal layout with the same trend-setting cabinet design that has become the distinct hallmark of all Imagine Series speakers.



Available in Dark Cherry Wood Veneer, Black Ash Wood Veneer, Walnut Wood Veneer, Gloss Black, or Gloss White.\*



## Imagine Series – The On-walls

Pair excellent visuals of today's ultra-thin flat panel TVs with beautiful and beautiful-sounding speakers.

**Imagine W3** – a complete 'front-of-room' solution taking the concept of the 'sound bar' to a new, higher level of performance. Combining left, centre, and right channels all in one streamlined enclosure.

**Imagine W1** – a single channel speaker that can be oriented either vertically or horizontally and be used as a front left, right, centre or surround channel speaker.



High Gloss Black

\*Some finishes may not be available in all countries.



PSB Imagine X2T Tower Speaker

## Imagine X Series – The Players

True-to-nature sound is the design goal of all PSB Speakers. Imagine X brings a new level of realism to these affordable speakers applying the latest speaker materials and technologies to PSB's most popular models. PSB's designers focused on simplicity—distilling sound to its purest essence—in order to bring listeners the experience that they really love.

The Imagine X series borrows many design innovations from our multiple award-winning Imagine models that cost only one third as much! Much of the cost savings come from a simplified cabinet design, but other advancements have allowed us to bring a new level of performance to this price range.

**Imagine X2T Tower** – a true four-driver transitional speaker that utilizes a separate midrange driver in its own tuned enclosure for ideal dispersion and low distortion at high sound pressure levels.

**Imagine X1T Tower** – This dual-woofer transitional two-and-a-half way design features identical 5¼" woofers that work in tandem at the lowest frequencies but crossover at different frequencies to integrate better with room acoustics and give the optimum dispersion and power response.

**Imagine XB** – ideal for smaller rooms or in concert with a powered subwoofer for a compact full-range system.

**Imagine XC** – This centre channel is engineered to maximize performance in multi-channel systems.

**Imagine XA** – Dolby's new Atmos® system takes surround sound to a completely new level by adding the 3rd dimension of height to the sound mix. The Imagine XA Elevation Speaker creates 'phantom ceiling speaker locations' by reflecting sound off the ceiling at a precise angle.



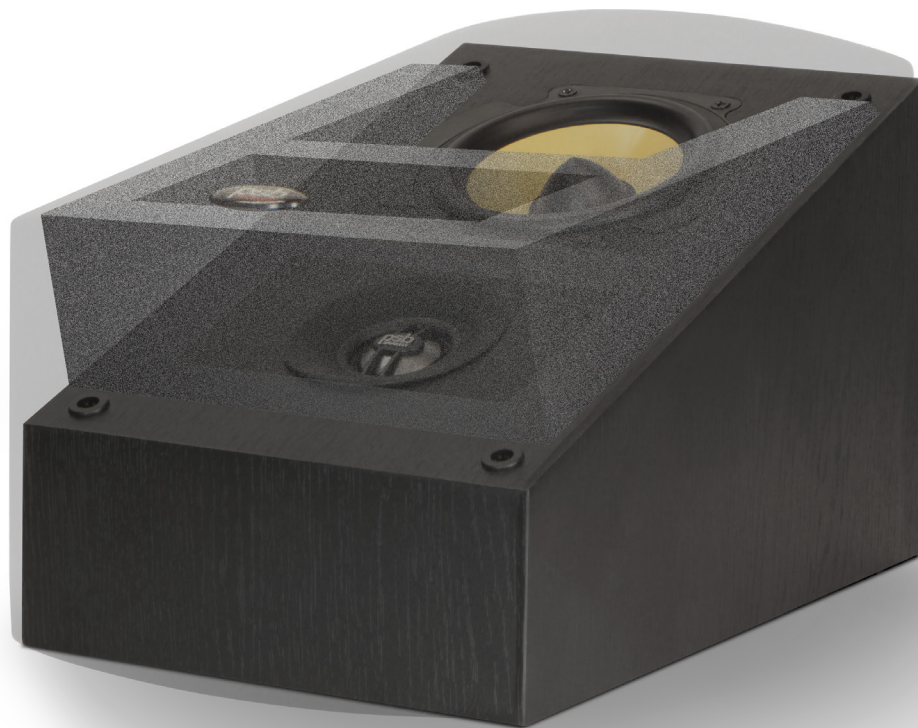
Black Ash Wood Veneer



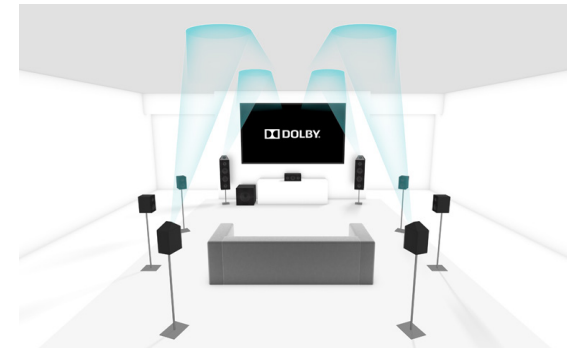
PSB Imagine XA Dolby Atmos Elevation Speaker  
with Imagine X1T and Imagine XC

## Imagine XA Dolby Atmos® Elevation Speaker

Take your home theatre experience to new heights with the Imagine XA Dolby Atmos Elevation Speaker. Specifically designed to be the height speaker in a Dolby Atmos surround system, the Imagine XA can be added to any existing floor-standing or bookshelf speaker to create a true, multi-dimensional sonic atmosphere that lets you feel all the excitement of your music and movies. Hear the rush of a jet fighter fly over you and the swift breeze of the wind through a high-up tree with life-like detail—just like you are there.



**Add Dolby Atmos To Your Existing Home Theatre System** – The Imagine XA is purpose-built to fit on top of PSB's Imagine X Series floor-standing and bookshelf speakers, creating a 5.1.2, 5.1.4, 7.1.2 or 7.1.4 Dolby Atmos system from your existing home theatre setup. It's also well suited to be wall-mounted as a stand-alone Dolby Atmos-enabled speaker, and adds a new overhead object based audio dimension to music and movie soundtracks.



**Advanced Vertically-Firing Driver Array** – Working with Dolby Laboratories, and using advanced acoustic research uncovered at Canada's famous National Research Council, PSB developed the Imagine XA with a very precise frequency and directivity response that perfectly matches Dolby's specs. Not only does this mean the Imagine XA's advanced driver technology and crossover design will produce the most lifelike Atmos experience, it also integrates perfectly with almost any home theatre system for the best possible object based 3D imaging.

The PSB Alpha B1 is exactly the kind of product this hobby needs—one that brings the High End down to earth, makes hi-fi attainable for just about everyone, and, beyond all, reminds us how much fun this hobby should be. The Alpha B1 has become my immediate recommendation for anyone seeking hi-fi advice. I'm proud to have a pair in my home. A simply sensational audio bargain. Thank you, Paul Barton.

— Stereophile



PSB Alpha B1 Bookshelf Speaker



**Alpha B1** – For those seeking a compact, cost effective speaker, yet do not want to compromise sound quality for space, the Alpha B1 Bookshelf Speakers are the answer. The B1 is the a descendent of the original Alpha bookshelf speaker, a budget product that turned the audio world on it's ear; it was named to Stereophile magazine's top 100 audio products of all time. The B1 follows that same recipe as the original Alpha: high value and high performance.



## Alpha Series – The Players

**Alpha PS1** – the PSB Alpha PS1 takes its most popular Alpha Series concept to an entirely new level by building a high performance amplifier into the left speaker to make a versatile desktop solution with enough acoustic output to rock a small to medium sized room.

**Alpha 1-100** – The Alpha PS1 and the SubSeries 100 subwoofer combine to create a complete media solution with jaw-dropping sound.

 High Gloss Black



**Alpha VS21** – PSB has been creating award-winning home theatre speaker systems for decades, and the Alpha VS21 brings this extraordinary experience to the sound bar category. The Alpha VS21 is super simple to install and operate, and has amazing features like Bluetooth apt-X streaming, Dolby Late Night and Stereo & Widesound modes that propel it ahead of other TV sound solutions.

 Black Ash Wood Veneer





PSB SubSeries 150 Subwoofer

## SubSeries Subwoofers

Our PSB engineers place particular emphasis on the overall musicality of our award-winning subwoofers to add that desired excitement to music and cinema experiences. While most of our speakers produce substantial bass, by placing the deep bass system into its own enclosure we can tailor the necessary elements in an efficient package and utilise them for best performance.

**SubSeries 450** – The newest member of the SubSeries family. The 450 is a DSP-controlled subwoofer housed in a unique cabinet with exposed diaphragms that facilitate air compression and movement for deceptively compact but powerful bass. This is a top-of-the-line product with signature PSB sound: low bass extension with low distortion, freedom from overload, and ideal crossover characteristics.

**SubSeries 150** – We’ve reimagined the subwoofer. Most subwoofers are large cubic forms that don’t often fit very well in a living room. The SubSeries 150 on the other hand, is a compact, slim, rectangular shape, allowing it to slip in easily beside, behind, or underneath living room furniture. This versatile and decor-friendly design with a beautiful curved glass black cabinet also offers several clever installation options.

**SubSeries 100** – This compact powered subwoofer may be small, but it’s got plenty of might. Ideally suited for bringing full range sound to smaller rooms and to complement smaller speakers, this powered wonder is a plug ‘n play solution that completes any home theatre, desktop audio, or game station audio system.

**SubSeries 300** – The first in a new line of subwoofer designs to be powered by NAD Electronics’ sophisticated, high efficiency amplifier. The SubSeries 300 offers a winning combination of power, high impact bass, and musicality.

**SubSeries 200** – An energy efficient subwoofer powered by a custom-designed NAD amplifier in a small-scale design. In addition to PSB Speakers “smart bass” circuitry, the SubSeries 200 offers extensive musicality and high-powered bass impact.

**SubSeries 125** – Building on its larger SubSeries models, the SubSeries 125 brings a new level of performance and value to the subwoofer category. Although it’s compact and unobtrusive, it provides the kind of high-impact performance associated with many bigger and more expensive subwoofers.





PSB CS1000 Universal Speaker

## CustomSound Series – Universal Speakers

**CS500 and CS1000 Universal Speakers** – Get outside and enjoy life-like music with PSB's series of rugged, all-weather, universal indoor and outdoor speakers. Durable enough to withstand extreme weather conditions, these speakers are also built for commercial installations.



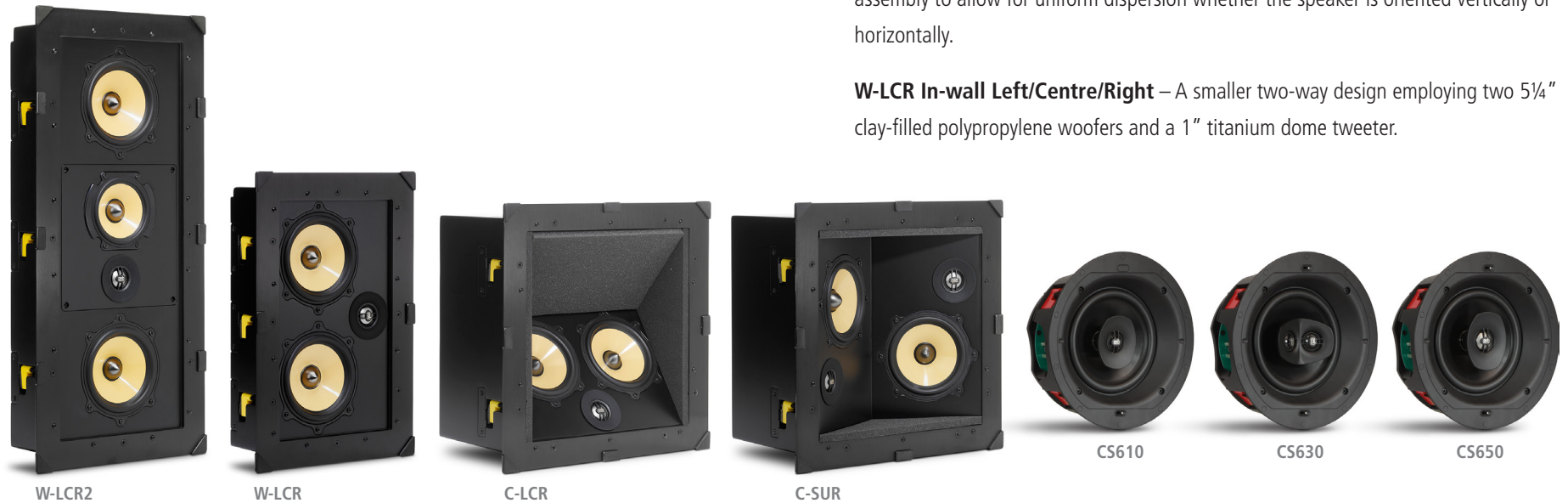


PSB CustomSound W-LCR In-wall

## CustomSound Series – Built-ins

**W-LCR2 In-wall Left/Centre/Right** – A true 3-way loudspeaker design employing two of the 5¼" woofers along with a 4" midrange speaker that seamlessly transitions to the 1" titanium dome tweeter. The midrange and tweeter are on rotatable sub-assembly to allow for uniform dispersion whether the speaker is oriented vertically or horizontally.

**W-LCR In-wall Left/Centre/Right** – A smaller two-way design employing two 5¼" clay-filled polypropylene woofers and a 1" titanium dome tweeter.



W-LCR2

W-LCR

C-LCR

C-SUR

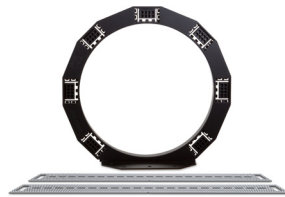
CS610

CS630

CS650



CS600 Series Back-cans



Preconstruction Bracket for CS Series

### INSTALLATION ACCESSORIES

**Back-cans** for the CS600 series speakers protect the rear of the speaker from dust and debris. **Pre-construction brackets** are available for all CustomSound Series Built-In Speakers.

**C-LCR In-ceiling Left/Centre/Right** – Drivers on an angled baffle in a deeper box to allow the proper dispersion required to create a nice three-dimensional sound stage when recessed into the ceiling.

**C-SUR In-ceiling** – Each woofer/tweeter pair has its own crossover and input, a single CustomSound C-SUR can be used for both the surround and surround back channels providing an ideal solution for a 7.1 theatre in smaller rooms. Three configurations are possible: bi-pole, di-pole and two-channel.

**CS610, CS630, CS650** – In-ceiling speakers that disappear from sight, but envelop you in sound. These speakers come with interchangeable square and round grills with magnetic attachment to match the surrounding décor.



PSB M4U Headphones





PSB M4U 8



PSB M4U 1

## M4U – Music for You Headphones

PSB gets up close and personal with your HiFi. We've taken over 40 years of bringing real sound to real people and packed it into our exciting M4U 4 headphones. Listen to music like never before. Comfort, style, and PSB's true-to-nature sound quality bring you so close to the music. It's like the music is meant just for you.

PSB's exclusive RoomFeel™ technology will make your music sound so rich and natural, you'll think you're listening to a set of high-end loudspeakers.

**M4U 8** – The M4U 8 model allows you to listen to music wirelessly with Bluetooth® aptX™ HD. Active Noise Cancellation (ANC) is remarkably sophisticated and effective, utilizing 4 microphones (others use only 2) which offer a 'listen through mode' allowing you to momentarily listen to the outside world as well as the ability to answer your connected phone.

**M4U 2** – Our M4U 2 Active Noise Cancelling Headphones don't let anything come between you and your music. The M4U 2 model features three convenient modes of operation: Active Noise Cancellation (ANC), Active Mode, and Passive Mode (without batteries). Listen all day and all night with 55 hours of run time in ANC or Active modes. When you're out of batteries, switch to Passive Mode without missing a beat.

■ □ Available in Black Diamond and Arctic White\*

**M4U 1** – these passive mode headphones are designed to give you the experience of RoomFeel, but without all the fuss. Just put them on and enjoy. No batteries or switches necessary. Just pure simple sound. Like all PSB designs, the M4U 1 model emphasizes true-to-nature sound that doesn't take anything away from the musical performance.

■ ■ ■ Available in Black Diamond, Monza Red and Baltic Grey\*

\*Some finishes may not be available in all countries.



PSB M4U TW1 True Wireless Earphones



PSB M4U TW1



PSB M4U 4

## M4U – Music for You Headphones

**M4U TW1** – Free from the hassle of messy wires, the M4U TW1 True Wireless Earphones let you enjoy powerful sound with deep bass and ultra-crisp details completely unrestrained. Its unique shape and soft rubber material provides a long-lasting fit that is comfortable and lightweight. Connect to any device quickly and easily with Bluetooth®, then use the high-clarity mic and one-touch sensitive button to control volume, skip tracks and answer calls. These high-performance earphones are sweat and weather resistant and have a rechargeable lithium-ion battery that delivers up to 5 hours of listening.

**M4U 4** – Features a two-way Hybrid Dual-Driver System of dynamic and balanced armature drivers with crossover for true HiFi listening.

These small and lightweight portable in-ear monitors are also designed for convenience for people on the move. The comfortable low-profile ergonomic design and around-the-ear cable placement ensures that the M4U 4s stay in place for active listeners. Two fully detachable cables are included, one with a 3-button Apple® remote with microphone for answering and making phone calls.

The M4U 4 is supplied with Comply™ Foam Tx-200 Series Eartips with wax guard for perfect in-ear fit and comfort. Made with high-tech, super-soft memory foam that is heat-sensitive and breathable, the Comply™ Foam Tx-200 Series Eartips conform to the dynamic shape of the ear canal. The foam's passive noise-reduction technology seals out unwanted ambient noise and pours pure music directly into your ears, without leaking bass. These eartips are extraordinarily soft and comfortable for long-term wear. Simply enjoy clear, crisp sound.

■ □ Available in Black Diamond and Arctic White\*

\*Some finishes may not be available in all countries.

# Imagine Series

	Imagine T3 Tower	Imagine C3 Centre	Imagine T2 Tower	Imagine T Tower	Imagine B Bookshelf	Imagine C Centre	Imagine S Surround
<b>Frequency Response</b>	(Anechoic Chamber)						
On Axis @ 0°±3dB	24-23,000Hz	48-23,000Hz	34-23,000Hz	38-23,000Hz	52-23,000Hz	52-23,000Hz	65-23,000Hz
On Axis @ 0°±1 1/2dB	30-20,000Hz	50-20,000Hz	36-20,000Hz	42-20,000Hz	55-20,000Hz	55-20,000Hz	68-20,000Hz
Off Axis @ 30°±1 1/2dB	30-10,000Hz	50-10,000Hz	36-10,000Hz	42-10,000Hz	55-10,000Hz	55-10,000Hz	68-10,000Hz
LF Cutoff -10dB	20Hz	40Hz	29Hz	35Hz	48Hz	46Hz	58Hz
<b>Sensitivity</b>	(1W (2.83V) @ 1M, IEC-Filtered pink noise, C-weighted)						
Anechoic Chamber	89dB	89dB	88dB	88dB	87dB	87dB	87dB
Listening Room	91dB	91dB	90dB	90dB	89dB	89dB	89dB
<b>Impedance</b>							
Nominal	8 Ohms	8 Ohms	8 Ohms	8 Ohms	8 Ohms	8 Ohms	8 Ohms
Minimum	4 Ohms	4 Ohms	4 Ohms	4 Ohms	4 Ohms	4 Ohms	4 Ohms Bipole/Dipole
<b>Input Power</b>	(RMS, Clipping <10% Time)						
Recommended Program	20 - 300 Watts 300 Watts	20 - 200 Watts 200 Watts	20 - 300 Watts 300 Watts	20 - 200 Watts 200 Watts	20 - 150 Watts 150 Watts	20 - 150 Watts 150 Watts	20 - 150 Watts 150 Watts
<b>Acoustic Design</b>							
Tweeter (Nominal)	1" (25mm) Titanium Dome with Ferrofluid Neodymium Magnet	1" (25mm) Titanium Dome with Ferrofluid Neodymium Magnet	1" (25mm) Titanium Dome with Ferrofluid Neodymium Magnet	1" (25mm) Titanium Dome with Ferrofluid Neodymium Magnet	1" (25mm) Titanium Dome with Ferrofluid Neodymium Magnet	1" (25mm) Titanium Dome with Ferrofluid Neodymium Magnet	2 x 1" (25mm) Titanium Dome with Ferrofluid Neodymium Magnet
Midrange (Nominal)	5 1/4" (133mm) Compressed Felt/Fiberglass Cone with Mastic Compound Coating Rubber Surround	3 1/4" (84mm) Compressed Felt/Fiberglass Cone with Mastic Compound Coating Rubber Surround	4" (102mm) Clay/Ceramic reinforced Polypropylene Cone Rubber Surround				
Woofers (Nominal)	3 x 7" (178mm) Compressed Felt/Fiberglass Cone with Mastic Compound Coating Rubber Surround	2 x 7" (178mm) Compressed Felt/Fiberglass Cone with Mastic Compound Coating Rubber Surround	3 x 5 1/4" (133mm) Clay/Ceramic reinforced Polypropylene Cone Rubber Surround	2 x 5 1/4" (133mm) Clay/Ceramic reinforced Polypropylene Cone Rubber Surround	5 1/4" (133mm) Clay/Ceramic reinforced Polypropylene Cone Rubber Surround	2 x 5 1/4" (133mm) Clay/Ceramic reinforced Polypropylene Cone Rubber Surround	2 x 5 1/4" (133mm) Clay/Ceramic reinforced Polypropylene Cone Rubber Surround
Crossover	450Hz, B3, 1,800Hz LR4	500Hz, B3, 1,800Hz LR4	500Hz, LR4, 1,800Hz, LR4	1,800Hz, LR4, 800Hz	1,800Hz, LR4	1,800Hz, LR4	2,000Hz, B3
Internal Volume	1.88 cu ft (53.1L)	0.84 cu ft (23.9L)	1.12 cu ft (31.8L)	1.0 cu ft (29L)	0.27 cu ft (7.7L)	0.54 cu ft (15.4L)	0.22 cu ft (6.2L)
Design Type	Transitional 5-way Triple Port Bass Reflex	Bass Reflex	Transitional 5-way Triple Port Bass Reflex	Dual Port Bass Reflex	Bass Reflex	Bass Reflex	Sealed
<b>Size (W x H x D)</b>	(Gross Dimensions)						
	11 1/2 x 47 5/8 x 15 1/8" * 292 x 1208 x 382mm	24 1/2 x 9 1/4 x 13 5/8" * 622 x 235 x 346mm	8 3/8 x 40 5/8 x 13 5/8" *210 x 1031 x 346mm	8 3/8 x 37 1/4 x 13 5/8" * 210 x 945 x 346mm	7 1/2 x 12 7/8 x 12 1/8" * 190 x 324 x 305mm	20 5/8 x 7 1/2 x 13 5/8" * 521 x 190 x 346mm	10 3/4 x 12 3/4 x 7 1/8" * 273 x 321 x 178mm
<b>Weight</b>							
Net Shipping	71lb (32.3kg)/each 97.2lb (44.2kg)/each	33.5lb (15.2kg)/each 43.8lb (19.9kg)/each	42.6lb (19.4kg)/each 59lb (26.8kg)/each	40.6lb (18.5kg)/each 47.8lb (21.7kg)/each	17.2lb (7.8kg)/each 38lb (17.3kg)/pair	26.8lb (12.2kg)/each 30lb (13.6kg)/each	16.3lb (7.4kg)/each 37lb (16.8kg)/pair
<b>Finish</b>							
	High Gloss Black or High Gloss Cherry Real Wood Veneer**	High Gloss Black or High Gloss Cherry Real Wood Veneer**	Black Ash, Dark Cherry Real Wood Veneer or Gloss Black **	Black Ash, Dark Cherry, Walnut Real Wood Veneer, Gloss Black or Gloss White**	Black Ash or Dark Cherry Real Wood Veneer **	Black Ash, Dark Cherry Real Wood Veneer or Gloss White**	Black Ash, Dark Cherry, Walnut Real Wood Veneer, Gloss Black or Gloss White**

\* Non-metric measurements are approximate.

\*\* Some finishes may not be available in all models and/or all countries.  
All specifications are subject to change without notice.



# Imagine X Series

# Alpha Series

	Imagine X2T Tower	Imagine X1T Tower	Imagine XB Bookshelf	Imagine XC Centre	Imagine XA Dolby Atmos® Enabled Certified	Alpha T1 Tower	Alpha B1 Bookshelf
<b>Frequency Response</b>	(Anechoic Chamber)						
On Axis @ 0°±3dB	30-23,000Hz	35-23,000Hz	55-23,000Hz	50-23,000Hz	100 - 23000Hz	55-21,000Hz	65-21,000Hz
On Axis @ 0°±1 1/2dB	40-20,000Hz	48-20,000Hz	70-20,000Hz	65-20,000Hz	NA	65-10,000Hz	65-10,000Hz
Off Axis @ 30°±1 1/2dB	45-10,000Hz	48-10,000Hz	70-10,000Hz	65-10,000Hz	NA	45Hz	65-10,000Hz
LF Cutoff -10dB	28Hz	30Hz	50Hz	45Hz	60Hz		55Hz
<b>Sensitivity</b>	(1W (2.83V) @ 1M, IEC-Filtered pink noise, C-weighted)						
Anechoic Chamber	88dB	88dB	87dB	88dB	85dB	89dB	89dB
Listening Room	90dB	90dB	89dB	90dB	87dB	91dB	91dB
<b>Impedance</b>							
Nominal	8 Ohms	8 Ohms	8 Ohms	8 Ohms	8 Ohms	8 Ohms	8 Ohms
Minimum	4 Ohms	4 Ohms	4 Ohms	4 Ohms	4 Ohms	6 Ohms	4 Ohms
<b>Input Power</b>	(RMS, Clipping <10% Time)						
Recommended Program	20 - 200 Watts 200 Watts	20 - 200 Watts 200 Watts	20 - 150 Watts 150 Watts	20 - 150 Watts 150 Watts	10 - 80 Watts 60 Watts	15 - 120 Watts 60 Watts	10 - 90 Watts 60 Watts
<b>Acoustic Design</b>							
Tweeter (Nominal)	1" (25mm) Titanium Dome with Ferrofluid Neodymium Magnet	1" (25mm) Titanium Dome with Ferrofluid Neodymium Magnet	1" (25mm) Titanium Dome with Ferrofluid Neodymium Magnet	1" (25mm) Titanium Dome with Ferrofluid Neodymium Magnet	1" (25mm) Titanium Dome with Ferrofluid Neodymium Magnet	3/4" (19mm) Aluminium Dome with Ferrofluid	3/4" (19mm) Aluminium Dome with Ferrofluid
Midrange (Nominal)	5 1/4" (133mm) Injection Moulded Fibre reinforced Polypropylene Cone Rubber Surround / Dual Magnet						
Woofer (Nominal)	2 x 6 1/2" (165mm) Injection Moulded Clay/Ceramic reinforced Polypropylene Cone Rubber Surround / Dual Magnet	2 x 5 1/4" (133mm) Injection Moulded Clay/Ceramic reinforced Polypropylene Cone Rubber Surround / Dual Magnet	5 1/4" (133mm) Injection Moulded Clay/Ceramic reinforced Polypropylene Cone Rubber Surround / Dual Magnet	2 x 5 1/4" (133mm) Injection Moulded Clay/Ceramic reinforced Polypropylene Cone Rubber Surround / Dual Magnet	4" (102mm) Clay/Ceramic reinforced Injection Moulded Polypropylene Cone Rubber Surround / Turbo Magnet	2 x 5 1/4" (133mm) Metalized Polypropylene Cone Rubber Surround	5 1/4" (133mm) Metalized Polypropylene Cone Rubber Surround
Crossover	2,200Hz, LR4, 500Hz, B3	1,800Hz, LR4, 800Hz	1,800Hz, LR4	1,800Hz, LR4	2,000Hz, B3	3,000Hz, B3	3,000Hz, B3
Internal Volume	1.93 cu ft (54.7L)	1.42 cu ft (40.2L)	0.32 cu ft (9.1L)	0.58 cu ft (16.4L)	TBD	1.19 cu ft (33.4L)	0.29 cu ft (8.0L)
Design Type	3-Way Sealed Mid-Range Chamber Dual Port Bass Reflex	Bass Reflex Front Port	Bass Reflex Rear Port	Bass Reflex Rear Port	Sealed	Bass Reflex 2 3/4" (70mm) Rear Port	Bass Reflex 1 1/2" (70mm) Rear Port
<b>Size (W x H x D)</b>	(Gross Dimensions)						
	9 x 40 1/8 x 17 5/8" * 227 x 1036 x 446mm	8 1/4 x 34 1/2 x 15 5/8" * 208 x 874 x 395mm	6 3/4 x 12 x 10 3/4" * 170 x 302 x 271mm	19 1/8 x 6 3/4 x 11 1/8" * 485 x 170 x 280mm	6 5/8 x 35 3/4 x 12 3/16" * 168 x 173 x 265mm	7 1/8 x 6 7/8 x 12 1/4" * 178 x 907 x 310mm	7 1/8 x 11 7/8 x 9 3/4" * 178 x 299 x 247mm
<b>Weight</b>							
Net	52lb (23.6kg)/each	38lb (17.3kg)/each	12.3lb (5.6kg)/each	19.8lb (9kg)/each	6.5lb (2.9kg)/each	29lb (13.2kg)/each	10.2lb (4.6kg)/each
Shipping	65lb (29.5kg)/each	45.3lb (20.6kg)/each	27.7lb (12.6kg)/pair	22.2lb (10.1kg)/each	15.6lb (7.1kg)/each	72.2lb (32.8kg)/pair	22.4lb (10.2kg)/pair
<b>Finish</b>							
	Black Ash	Black Ash	Black Ash	Black Ash	Black Ash	Black Ash, Sienna, or Dark Cherry**	Black Ash, Sienna, or Dark Cherry**

\* Non-metric measurements are approximate.

\*\* Some finishes may not be available in all models and/or all countries.  
All specifications are subject to change without notice.

# CustomSound

	<b>CS1000</b> Universal Loudspeaker	<b>CS500</b> Universal Loudspeaker		<b>W-LCR2</b> In-Wall	<b>W-LCR</b> In-Wall	<b>C-LCR</b> In-Ceiling	<b>C-SUR</b> In-Ceiling	<b>CS650</b> In-Ceiling	<b>CS630</b> In-Ceiling	<b>CS610</b> In-Ceiling
<b>Frequency Response</b>	(Anechoic Chamber)		<b>Frequency Response</b>							
On Axis @ 0°±3dB	45-23,000Hz	63-23,000Hz	On Axis @ 0°±3dB	65-23,000Hz	70-23,000Hz	65-23,000Hz	70-23,000Hz	48-20,000kHz	50-20,000kHz	50-20,000Hz
On Axis @ 0°±1 1/2dB	59-20,000Hz	65-20,000Hz	On Axis @ 0°±1 1/2dB	70-20,000Hz	75-20,000Hz	70-20,000Hz	75-20,000Hz			
Off Axis @ 30°±1 1/2dB	59-10,000Hz	65-10,000Hz	Off Axis @ 30°±1 1/2dB							
LF Cutoff -10dB	40Hz	50Hz	LF Cutoff -10dB	50Hz	62Hz	50Hz	65Hz			
<b>Sensitivity</b>	(1W (2.83V) @ 1M, IEC-Filtered pink noise, C-weighted)		<b>Sensitivity</b>							
Anechoic Chamber	86dB	85dB	Anechoic Chamber	87dB	89dB	88dB	89dB	86dB	85dB	85dB
Listening Room	88dB	87dB	Listening Room	89dB	91dB	90dB	91dB	88dB	87dB	87dB
<b>Impedance</b>			<b>Impedance</b>							
Nominal	8 Ohms	8 Ohms	Nominal	6 Ohms	6 Ohms	6 Ohms	6 Ohms	6 Ohms	10 Ohms	6 Ohms
Minimum	6 Ohms	6 Ohms	Minimum	4 Ohms	4 Ohms	4 Ohms	4 Ohms	4 Ohms	8 Ohms	4 Ohms
<b>Input Power</b>	(RMS, Clipping <10% Time)		<b>Input Power</b>							
Recommended Program	20 - 150 Watts 150 Watts	20 - 120 Watts 120 Watts	Recommended Program	20 - 200 Watts 200 Watts	20 - 150 Watts 150 Watts	20 - 150 Watts 150 Watts	20 - 150 Watts 150 Watts	10 - 100 Watts	10 - 100 Watts	10 - 100 Watts
<b>Acoustic Design</b>			<b>Acoustic Design</b>							
Tweeter (Nominal)	1" (25mm) Titanium Dome with Ferrofluid Neodymium Magnet	1" (25mm) Titanium Dome with Ferrofluid Neodymium Magnet	Tweeter (Nominal)	1" (25mm) Titanium Dome with Ferrofluid	1" (25mm) Titanium Dome with Ferrofluid	1" (25mm) Titanium Dome with Ferrofluid	2 x 1" (25mm) Titanium Dome with Ferrofluid	1" (25mm) Titanium Dome with Ferrofluid	2 x 3/4" (19mm) Aluminum Dome Black anodized	3/4" (19mm) Aluminum Dome Black Anodized
Midrange (Nominal)			Midrange (Nominal)	4" (102mm) Clay/Ceramic reinforced Polypropylene Cone Rubber Surround						
Woofers (Nominal)	6 1/2" (165mm) Clay/Ceramic reinforced Polypropylene Cone Rubber Surround	5 1/4" (133mm) Clay/Ceramic reinforced Polypropylene Cone Rubber Surround	Woofers (Nominal)	2 x 5 1/4" (133mm) Clay/Ceramic reinforced Polypropylene Cone Rubber Surround	2 x 5 1/4" (133mm) Clay/Ceramic reinforced Polypropylene Cone Rubber Surround	2 x 5 1/4" (133mm) Clay/Ceramic reinforced Polypropylene Cone Rubber Surround	2 x 5 1/4" (133mm) Clay/Ceramic reinforced Polypropylene Cone Rubber Surround	6 1/2" (165mm) Fiber filled Injection Molded Polypropylene Cone / Rubber Surround	6 1/2" (165mm) Fiber filled Injection Molded Polypropylene Cone / Rubber Surround Dual Voice Coil	6 1/2" (165mm) Fiber filled Injection Molded Polypropylene Cone / Rubber Surround
Crossover	2,200Hz, LR4	1,800Hz, LR4	Crossover	370Hz, 2200Hz LR4	1700Hz, LR4	1750Hz, LR4	1500Hz, LR4	1800Hz, LR4	2100Hz, LR4	2100Hz, LR4
Internal Volume	0.3 cu ft (8.5L)	0.2 cu ft (5L)	Internal Volume	0.28 cu ft (6.46L)	0.12 cu ft (3.48L)	0.36 cu ft (10.24L)	0.4 cu ft (11.2L)	N/A	N/A	N/A
Design Type	Bass Reflex (Gross Dimensions)	Sealed	Design Type	Sealed	Sealed	Sealed	Sealed	Open Back	Open Back	Open Back
<b>Size (W x H x D)</b>			<b>Size (W x H x D)</b>							
	9 1/4 x 12 1/4 x 11 3/4" * 235 x 310 x 296mm	7 7/8 x 10 5/8 x 9 7/8" * 196 x 268 x 248mm	Cutout Dimensions	10 x 23" * (253 x 585mm)	9 3/16 x 14 3/8" * (233 x 365mm)	13 3/16 x 13 3/16" * (335 x 335mm)	13 3/16 x 13 3/16" * (335 x 335mm)	8 3/8" * Diameter (212mm) Diameter	8 3/8" * Diameter (212mm) Diameter	8 3/8" * Diameter (212mm) Diameter
			Mounting Depth	3 3/4" * (95mm)	3 3/4" * (95mm)	7 3/4" (196mm) *	7 3/4" * (196mm) *			
			Grille Dimensions	11 1/2 x 24 5/8 x 3/8" * (292 x 624 x 7mm)	10 3/4 x 16 x 3/8" * (273 x 406 x 7mm)	14 3/4 x 14 3/4 x 3/8" * (373 x 373 x 7mm)	14 3/4 x 14 3/4 x 3/8" * (373 x 373 x 7mm)			
<b>Weight</b>			<b>Weight</b>							
Net Shipping	10lb (4.5kg)/each 24lb (11kg)/pair	7lb (3.2kg)/each 18lb (8kg)/pair	Net Shipping	17.6lb (8.8kg)/each 24lb (10.9kg)/pair	11.7lb (5.3kg)/each 15lb (6.8kg)/each	17.6lb (8.8kg)/each 24lb (10.9kg)/each	17.6lb (8.8kg)/each 24lb (10.9kg)/each	4.6lb (2.1kg)/each	4.8lb (2.2kg)/each	4.4lb (2kg)/each
<b>Finish</b>			<b>Finish</b>							
	Black or White**	Black or White**		White	White	White	White	White	White	White

\* Non-metric measurements are approximate.

\*\* Some finishes may not be available in all models and/or all countries.  
All specifications are subject to change without notice.

# Powered Speakers

	SubSeries 450 Subwoofer	SubSeries 300 Subwoofer	SubSeries 200 Subwoofer	SubSeries 150 Subwoofer	SubSeries 125 Subwoofer	SubSeries 100 Subwoofer	PS1 Powered Speaker	VS21 VisionSound
<b>Frequency Response</b>	(Anechoic Chamber)							
On Axis @ 0°±3dB LF Cutoff -10dB	20-150Hz 15Hz	27-150Hz 24Hz	28-150Hz 25Hz	26-150Hz 20Hz	35-150Hz 31Hz	39Hz - 150Hz 35Hz	80-22,000Hz 58Hz	55-23,000Hz 40Hz
<b>Amplifier Power</b>	(Internal Amplifier)							
Continuous Dynamic, Peak	400 Watts 400 Watts, 600 Watts	300 Watts 425 Watts, 850 Watts	200 Watts 275 Watts, 550 Watts	100 Watts 100 Watts, 200 Watts	125 Watts 160 Watts, 320 Watts	50W 50W, 100W	2 x 20W 2 x 40W	6 x 17 Watts
<b>Acoustic Design</b>								
Tweeter (Nominal)							3/4" (19mm) Aluminium Dome	2 x 1" (25mm) Textile Cone
Mid-Range								2 x 2" (50mm) Treated Paper Cone / Rubber Surround
Woofers (Nominal)	12" (300mm) Polypropylene Cone Rubber Surround 2" (50mm) Voice Coil 50oz (1400g) Magnet	12" (300mm) Polypropylene Cone Rubber Surround 2" (50mm) Voice Coil 50oz (1400g) Magnet	10" (250mm) Polypropylene Cone Rubber Surround 1 1/2" (38mm) Voice Coil 35oz (990g) Magnet	6 1/2" (165mm) Polypropylene Cone Rubber Surround	8" (203mm) Polypropylene Cone Rubber Surround 1 1/2" (38mm) Voice Coil 28oz (794g) Magnet +20oz (567g) SH Magnet	5 1/4" (135mm) Polypropylene Cone Elliptical Surround	3 1/2" (90mm) Polypropylene Cone Rubber Surround	2 x 4" (102mm) Rubber Surround
Crossover	Variable 50-150Hz, LR4 Low Pass Filter	Variable 50-150Hz, LR4 Low Pass Filter	Variable 50-150Hz, LR4 Low Pass Filter	Variable 50-150Hz, LR2 Low Pass Filter	Variable 50-150Hz, LR2 Low Pass Filter	Variable 50Hz - 150Hz	2100Hz LR4	260Hz, 3kHz, LR4
Design Type	Bass Reflex 3" (75mm) Down Firing Port	Bass Reflex 3" (75mm) Down Firing Port	Bass Reflex 2 5/8" (67mm) Down Firing Port	Sealed	Bass Reflex 1" x 8" (25mm x 203mm) Front Port, Video Shielded	Sealed	Bass Reflex Rear Slot Port	Bass Reflex Twin Rear Slot Ports
<b>Size (W x H x D)</b>	(Gross Dimensions)							
	15 3/8 x 15 1/8 x 16 5/8" * (390 x 384 x 420mm)	15 3/8 x 20 1/8 x 17 3/8" * (390 x 510 x 441mm)	13 3/8 x 17 1/2 x 15 5/8" * (338 x 443 x 396mm)	17 1/8 x 10 7/8 x 4 7/8" * (432 x 266 x 122mm)	9 5/8 x 14 1/8 x 15 5/8" * (244 x 359 x 396mm)	6 3/8 x 6 3/8 x 7 7/8" * (162 x 162 x 199mm)	4 1/2 x 7 7/8 x 6 7/8" * (114 x 197 x 174mm)	24 1/16 x 7 1/4 x 15 1/8" * (625 x 182 x 384mm)
<b>Weight</b>								
Net Shipping	43lb (19.5kg)/each 50lb (22.7kg)/each	43lb (19.5kg)/each 50lb (22.7kg)/each	34lb (15.5kg)/each 39lb (18kg)/each	13.3lb (6.1kg)/each 19lb (8.6kg)/each	23.8lb (10.8kg)/each 27lb (12.3kg)/each	6.05lb (2.75kg)/each 7.6lb (3.46kg)/each	8.3lb (3.8kg)/pair 12lb (5.5kg)/pair	24lb (11kg)/each 29lb (13kg)/each
<b>Finish</b>								
	High Gloss Black	Black Ash	Black Ash or Dark Cherry **	High Gloss Black	Black Ash or Dark Cherry **	High Gloss Black	Gloss Black	Black Ash
<b>Features</b>								
	Volume Control Variable Crossover Control Phase switch Auto on/off LFE input <0.5W Standby Power	Front mounted volume and crossover Phase switch Auto on/off LFE input <0.5W Standby Power	Front mounted volume and crossover Phase switch Auto on/off LFE input <0.5W Standby Power		Front mounted volume and crossover Phase switch Auto on/off LFE input <0.5W Standby Power	4 Silicone Rubber Feet Amplifier Panel Volume Control Variable Frequency Phase Switch 0°-180° 2 x RCA L(LFE) / R inputs Auto On/Off (Standby) <0.5W Standby Power Consumption	Volume Control Mono Subwoofer Output Low Level RCA Input Low Level 1/8" (3mm) "AUX" Input	

\* Non-metric measurements are approximate.

\*\* Some finishes may not be available in all models and/or all countries.  
All specifications are subject to change without notice.



# M4U Headphones

	M4U 8 Headphone	M4U 4 In-Ear Monitors	M4U 2 Headphone	M4U 1 Headphone	M4U TW1 In-Ear Monitors
<b>Frequency Response</b>					
LF Cutoff -10dB LF Cutoff -3dB Within $\pm 1/2$ dB	10-20,000Hz 15-20,000Hz 20-20,000Hz	10-20,000Hz 15-20,000Hz 20-20,000Hz	10-25,000Hz 15-20,000Hz 20-20,000Hz	10-20,000Hz 15-20,000Hz 20-20,000Hz	20-20,000Hz
<b>Sensitivity</b>					
1kHz/1mW	102dB	102dB	102dB	102dB	Not Applicable
<b>Power Handling</b>					
Maximum	30mW	10mW	30mW	30mW	Not Applicable
<b>Impedance</b>					
Passive Active/ANC	32 Ohms	16 Ohms	32 Ohms 10k Ohms	32 Ohms —	Not Applicable
<b>Transducer</b>					
Type Operating Principle Size	Dynamic Closed 40mm	Hybrid Dynamic & Balance Armature Vented 8mm Dynamic Single BA	Dynamic Closed 40mm	Dynamic Closed 40mm	Hybrid Dynamic & Balance Armature Vented 8mm Dynamic Single BA
<b>Ear Coupling</b>					
	Circumaural	In-Ear	Circumaural	Circumaural	In-Ear
<b>Connection</b>					
	3.5mm (1/8") Stereo Jack (Left or Right) Bluetooth aptX® USB	3.5mm (1/8") Stereo Jack	3.5mm (1/8") Stereo Jack (Left or Right)	3.5mm (1/8") Stereo Jack (Left or Right)	Bluetooth V4.1
<b>Construction</b>					
Headband Driver Enclosure Earpads/Headpad Cover Travel Case	Spring Steel ABS + Polycarbonate Leatherette EVA	ABS Comply Foam Tx-200 & Silicon Eartips EVA	Polycarbonate ABS+Polycarbonate Leatherette EVA	Polycarbonate ABS+Polycarbonate Leatherette EVA	ABS + Rubber Silicon Eartips EVA
<b>Size (W x H x D)</b>					
Overall	6 3/8 x 8 3/8 x 3 1/2" (Travel Case) 160 x 210 x 86mm	4 7/16 x 2 3/4 x 1" (Travel Case) 110 x 70 x 25mm	7 7/8 x 7 7/8 x 2 7/8" * 200 x 200 x 70mm 2 3/4 x 3 7/8 x 3/4" 68 x 98 x 17mm	7 7/8 x 7 7/8 x 2 7/8" * 200 x 200 x 70mm 2 3/4 x 3 7/8 x 3/4" 68 x 98 x 17mm	4 9/16 x 3 15/64 x 1 27/64" (Travel Case) 116 x 82 x 36mm
Ear Cushion Outside	2 3/4 x 3 7/8 x 3/4" * 68 x 98 x 17mm				
<b>Weight</b>					
	12oz (342g) with cable	0.9oz (25g) with cable	12.8oz (362g) with Batteries	12oz (340g)	0.14oz (9.4g) with cable
<b>Finish</b>					
	Jet Black	Black Diamond or Arctic White	Black Diamond or Arctic White	Black Diamond, Baltic Grey or Monza Red	Black
<b>Battery Life</b>					
	—	—	55 hours	—	—
<b>Cables</b>					
Push Function/Monitor Cable or Monitor Cable	1.5m (59") Detachable Tangle-free	1.2m (47") Detachable Tangle-free	1.5m (59") Detachable Tangle-free	—	150mm(6") Detachable Tangle-Free
Push Function Cable or Apple Control	—	1.2m (47") Detachable Tangle-free	—	1.5m (59") Detachable Tangle-free	

[www.psbSpeakers.com](http://www.psbSpeakers.com)

PSB Speakers will not assume any liability for errors in this brochure which may result in errors being made by retailers, custom installers, cabinet makers or other end users based on information contained in this document.

PSB Speakers reserves the right to change specifications or features without notice. ©2015 PSB Speakers, a division of Lenbrook Industries Limited. PSB is a registered trademark of Lenbrook Industries Limited. All rights reserved. No part of this publication may be reproduced, stored or transmitted in any form whatsoever without the written permission of PSB Speakers.

17-116 Printed February 2018 PSB FULL LINE BROCH

**psb**  
**SPEAKERS**